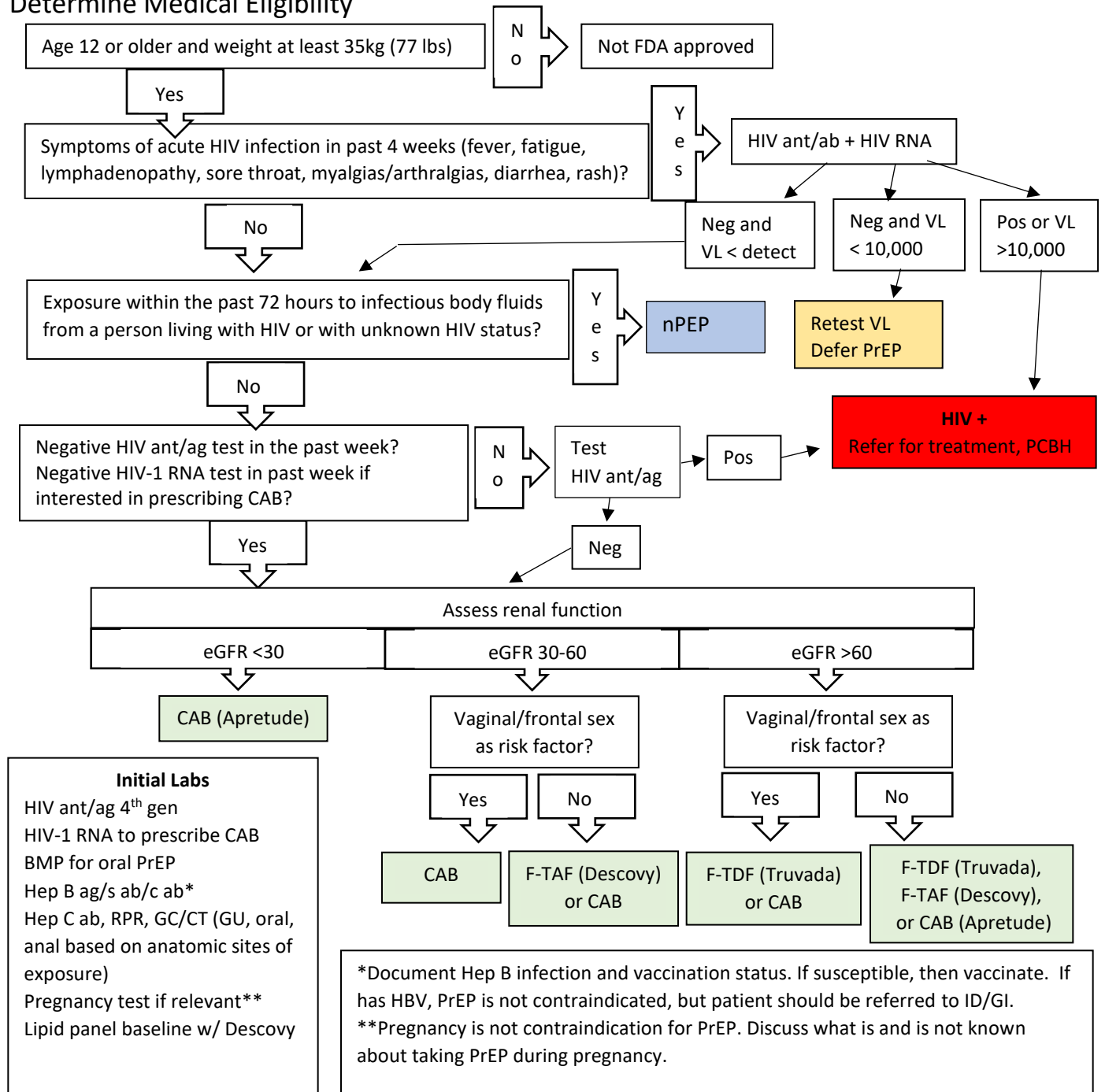


VMG HIV Pre-Exposure Prophylaxis (PrEP) Guidelines 2023

1. Assess Risk for HIV Infection

Sexually Active Adults and Adolescents	Persons Who Inject Drugs (PWID)
<ul style="list-style-type: none"> Anal or vaginal sex in the past 6 months; and HIV-positive sexual partner (especially if partner has unknown or detectable viral load); or Recent bacterial STI (past 6 months); or History of inconsistent or no condom use with sexual partner(s) <p>*sero-discordant couples where partner undetected may not need PrEP. U=U</p>	<ul style="list-style-type: none"> HIV positive injection partner or Sharing of drug injection or preparation equipment in the past 6 months
<p>USE CLINICAL JUDGEMENT! Consider high risk behaviors (transactional sex, potential future condom-less sex)</p>	

2. Determine Medical Eligibility



VMG HIV Pre-Exposure Prophylaxis (PrEP) Guidelines 2023

3. Prescribe

Diagnostic Codes:

Visits	Z20.6	Contact with and (suspected) exposure to HIV
	Z20.2	Contact with and (suspected) exposure to infections with a predominantly sexual mode of transmission
	F19.2	Injection drug use exposure
Initial Tests	Z01.812	Encounter for pre-procedural laboratory examination (Applicable to blood and urine tests prior to treatment or procedure)
	Z11.3	Encounter for screening for infections with a predominantly sexual mode of transmission
	Z11.4	Encounter for screening for human immunodeficiency virus
	Z11.59	Encounter for screening for other viral diseases
Subsequent Tests	Z20.2	Contact with and (suspected) exposure to infections with a predominantly sexual mode of transmission
	Z11.4	Encounter for screening for human immunodeficiency virus
	Z79.899	Other long term drug therapy
	Z20.5	Contact with and (suspected) exposure to viral hepatitis

Medications:

F/TDF – brand name Truvada®

Emtricitabine (F) 200 mg in combination with tenofovir disoproxil fumarate (TDF) 300 mg

FDA approved for adults and adolescents >35kg who are deemed to be at substantial risk for HIV

Sig: Take one tab by mouth daily *Dispense:* 30 tablets 2 refills *or* 90 tablets 0 refills

- eGFR must be >60
- Consider alternative if bone issues (osteoporosis). If osteoporosis / high risk obtain DEXA at time of prescription and repeat in 1-2 years
- Generic available

or

F/TAF – brand name Descovy®

Emtricitabine (F) 200 mg in combination with tenofovir alafenamide (TAF) 25 mg

FDA approved for adults and adolescents >35kg who are deemed to be at substantial risk for HIV

Sig: Take one tab by mouth daily *Dispense:* 30 tablets 2 refills *or* 90 tablets 0 refills

- eGFR must be >30
- Not approved for those whose HIV risk is from receptive vaginal sex as has not been studied in people with a vagina / neovagina
- Eval lipid panel at baseline and then annually.

Counseling points oral meds:

- Common side effects oral meds: nausea, flatulence, diarrhea, fatigue, headache. Usually resolves in 2-4 weeks.
- 99% risk reduction with daily use. Counsel on importance of adherence!
- Oral PrEP reaches maximum protection from HIV for receptive anal sex at about 7 days of daily use. For receptive vaginal sex and injection drug use, PrEP reaches maximum protection at up to about 21 days of daily use.
- Document: negative HIV ant/ag test within the past week, Hep B infection and vaccine status, renal function, counseling regarding adherence, side effects, and follow up monitoring parameters

VMG HIV Pre-Exposure Prophylaxis (PrEP) Guidelines 2023

Cabotegravir LA – brand name Apretude®

FDA approved for adults and adolescents >35kg who are deemed to be at substantial risk for HIV

Sig: Inject 600 mg cabotegravir (3mL) by intramuscular route into gluteal muscle. Second dose administered 4 weeks after first dose. Subsequent dosing every 8 weeks thereafter

- Common side effects Cabotegravir LA: pain/tenderness at injection site (can pre-treat w APAP or NSAIDS, apply heat pack after injection),
- Risk of resistance, “tail” if missed or discontinued, need to transition to oral PrEP / fully avoid risk of HIV for a year after discontinuing
- Need to be seen in office every 2 months for labs, visit with provider, injection
- Unclear timing to maximal protection. Counsel patients to avoid behaviors that put them at increased risk of HIV for minimum of 1 week, conservative approach 1 month.
- Document: negative HIV ant/ag test and HIV-1 RNA test within the past week, Hep B infection and vaccine status, counseling regarding adherence, side effects, follow up monitoring parameters, transitioning off of Cab LA

Paying for PrEP: Covered by insurance. If no insurance or difficulty paying copays see below resources:

- Patient assistance program: <https://readysetprep.hiv.gov/>
- Co-pay assistance program: <https://www.gileadadvancingaccess.com/>
- MA PrEP drug assistance program: <https://crine.org/prepdap>

4. Monitor:

a. F/TDF or F/TAF: Visits and labs every 3 months

Labs	Counseling points q 3 months
Every 3 months <ul style="list-style-type: none"> • HIV ant/ag 4th gen • Pregnancy test if relevant • STI testing if high-risk sex (MSM, trans women) 	<ul style="list-style-type: none"> • Screen for side effects • Provide medication adherence and behavioral risk reduction support • Assess for side effects • PWID: assess access to sterile needles/syringes and to drug treatment services.
Every 6 months <ul style="list-style-type: none"> • Serum Cr • STI testing non high risk sex behavior 	
Every 12 months <ul style="list-style-type: none"> • HCV ab for PWID, MSM, or trans women • Lipids if on F/TAF 	

a. Cabotegravir LA: Follow up visit 1 month then every 2 months.

Labs	Counseling points q 2 months
Every 2 months <ul style="list-style-type: none"> • HIV RNA and HIV ant/ag 4th gen • Pregnancy test if relevant 	<ul style="list-style-type: none"> • Screen for side effects • Provide medication adherence and behavioral risk reduction support • Assess for side effects • PWID: assess access to sterile needles/syringes and to drug treatment services.
Every 4 months <ul style="list-style-type: none"> • STI testing if high-risk sex (MSM, trans women) 	
Every 6 months <ul style="list-style-type: none"> • STI testing non high risk sex behavior 	
Every 12 months <ul style="list-style-type: none"> • HCV ab for PWID, MSM, trans women 	