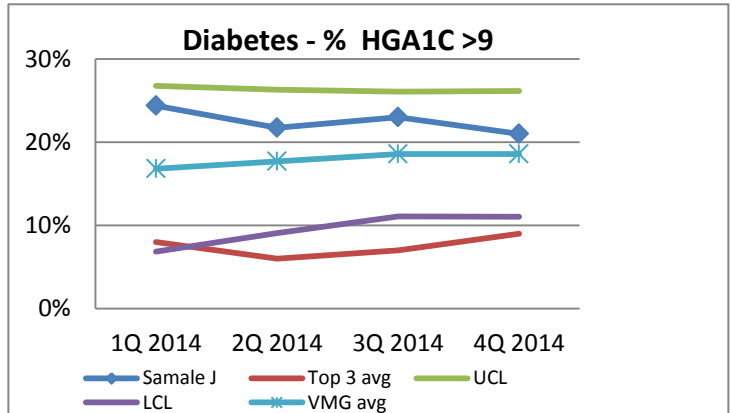


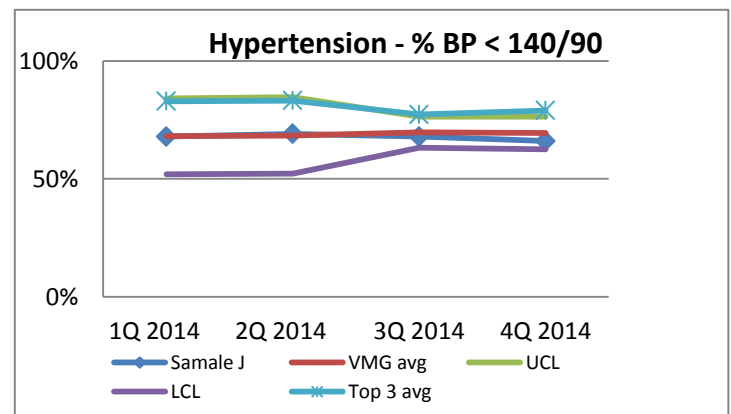
DEC 2014 Practitioner Snapshot

Samale J

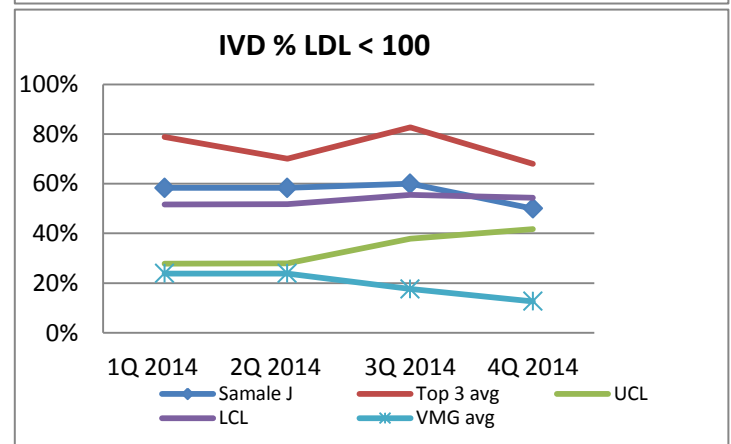
| Monthly Productivity Measures | Score | Benchmark | At Benchmark |
|-------------------------------|-------|-----------|--------------|
| Patients Seen | 263 | 191 | |
| Panel size | 989 | 900 | |
| Fill Rate (%) | 86% | 90% | ● |
| %99214 | 54% | >35% | ● |



| Quarterly Quality Measures | Score | Benchmark | At Benchmark |
|----------------------------------|-------|-----------|--------------|
| BP < 140/90 (in pts with HTN) | 66% | 75% | ● |
| HgbA1C >9 (in pts with Diabetes) | 23% | <10% | ● |
| LDL < 100 (in pts with Diabetes) | 42% | 75% | ● |
| LDL < 100 (in pts with IVD) | 47% | 80% | ● |



| Quarterly Utilization Measures | Score | Benchmark | At Benchmark |
|--------------------------------|-------|-----------|--------------|
| MRI orders/1000 patients seen | 3.9 | 3.51 | ● |
| CT Orders / 1000 patients seen | 10 | 4.84 | ● |



| Monthly Efficiency Measures | Score | Benchmark | At Benchmark |
|------------------------------------|-------|-----------|--------------|
| Minutes to Complete Note | 10 | 6 | ● |
| Notes Closed Same Day (%) | 92% | >80% | ● |
| % Note Completed in the Visit | 86% | 66% | ● |
| Patients on Portal last 6 mos. (%) | 48% | 50% | ● |
| 48 Hour Encounter Close Rate | 100% | 95% | ● |
| 72 Hour Encounter Close Rate | 100% | 95% | ● |

