

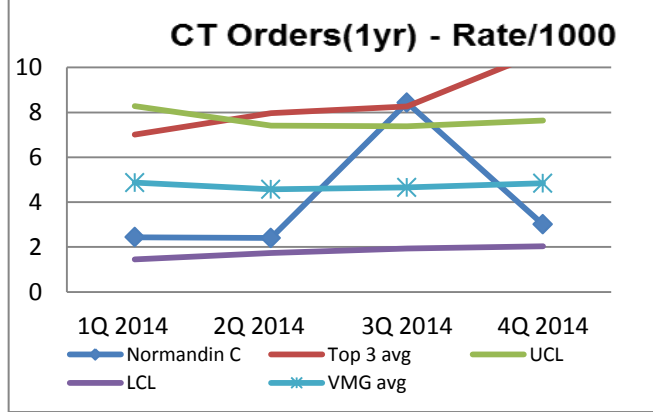
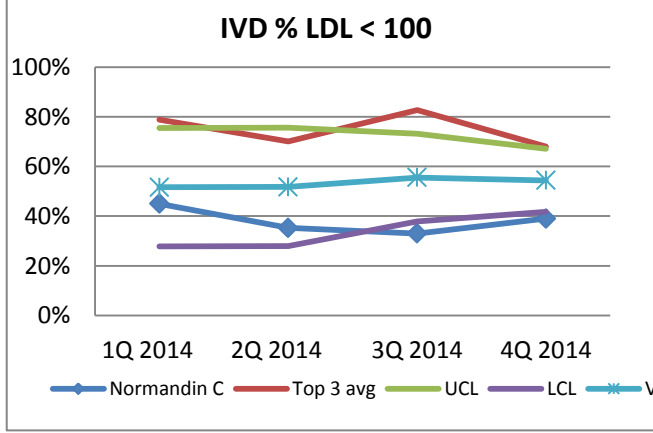
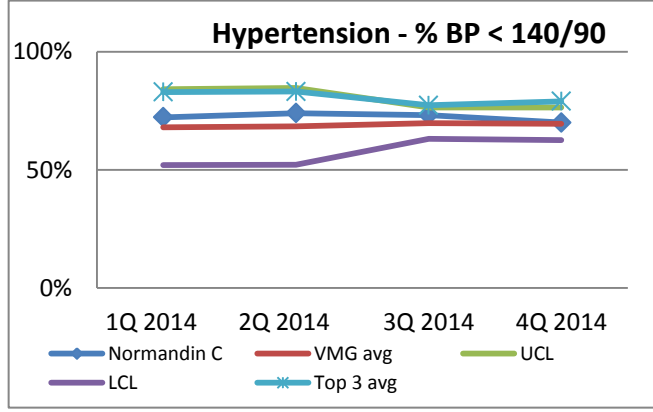
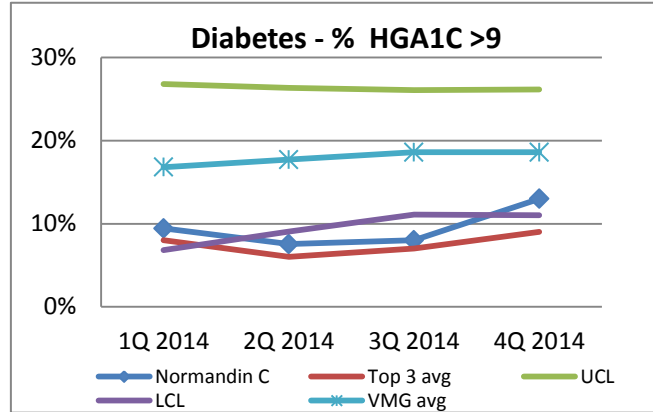
DEC 2014 Practitioner Snapshot Normandin C

Monthly Productivity Measures	Score	Benchmark	At Benchmark
Patients Seen	213	228	
Panel size	1133	850	
Fill Rate (%)	90%	90%	●
%99214	55%	>35%	●

Quarterly Quality Measures	Score	Benchmark	At Benchmark
BP < 140/90 (in pts with HTN)	70%	75%	●
HgbA1C >9 (in pts with Diabetes)	8%	<10%	●
LDL < 100 (in pts with Diabetes)	39%	75%	●
LDL < 100 (in pts with IVD)	33%	80%	●

Quarterly Utilization Measures	Score	Benchmark	At Benchmark
MRI orders/1000 patients seen	4.4	3.51	●
CT Orders / 1000 patients seen	8	4.84	●

Monthly Efficiency Measures	Score	Benchmark	At Benchmark
Minutes to Complete Note	6	6	●
Notes Closed Same Day (%)	49%	>80%	●
% Note Completed in the Visit	45%	66%	●
Patients on Portal last 6 mos. (%)	62%	50%	●
48 Hour Encounter Close Rate	91%	95%	●
72 Hour Encounter Close Rate	94%	95%	●



DEC 2014 Practitioner Snapshot Normandin C

--

--

--

--

/MG avg