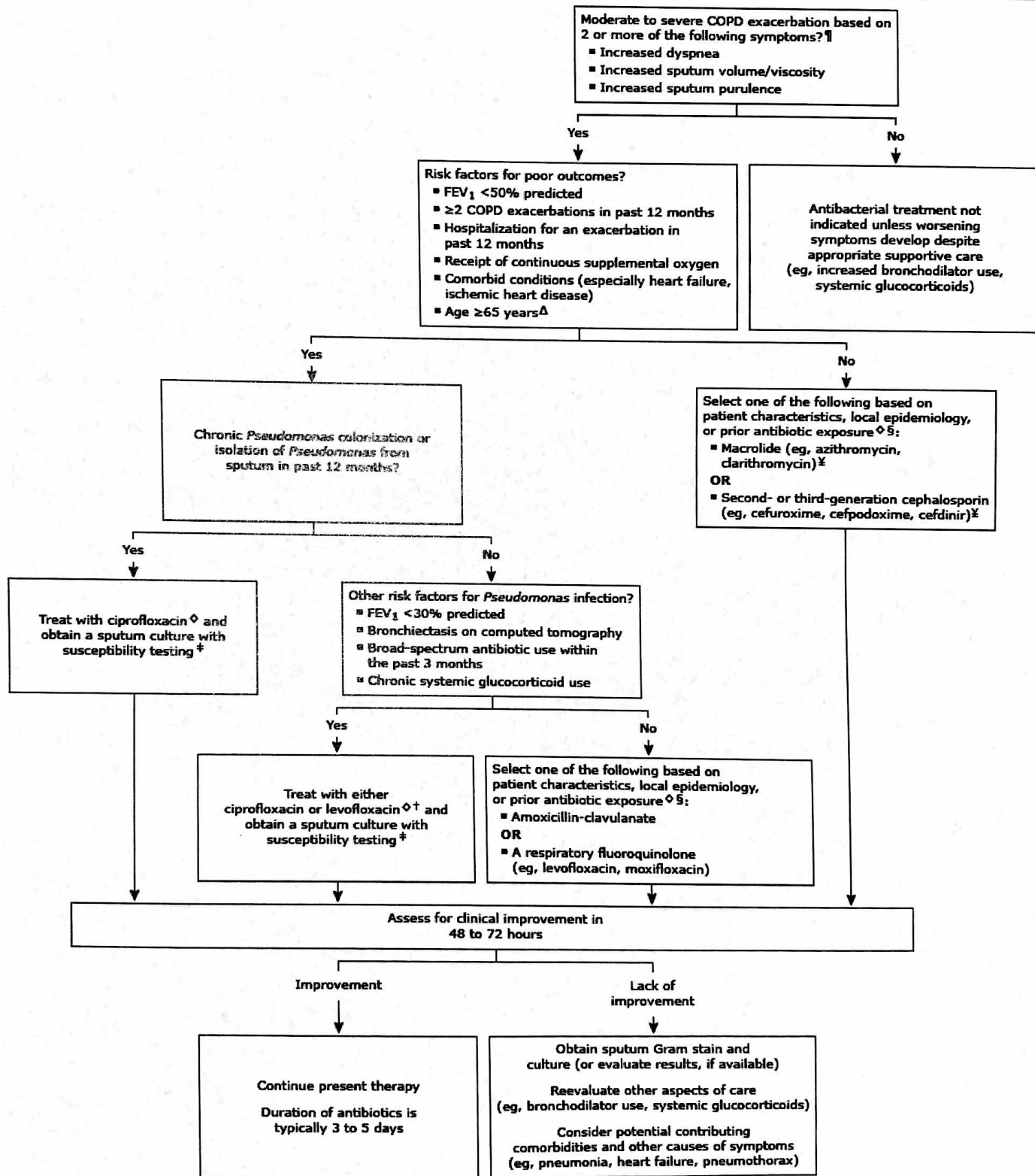


**Our approach to empiric antibacterial treatment of COPD exacerbations in outpatients\***



Prompt and appropriate antibiotic use has been associated with improved clinical outcomes in patients with moderate to severe COPD exacerbations. Empiric regimens are designed to target the most likely pathogens (*Haemophilus influenzae*, *Moraxella catarrhalis*, and *Streptococcus pneumoniae*) and should be broadened to target drug-resistant pathogens and difficult-to-eradicate pathogens (eg, macrolide-resistant *S. pneumoniae*, nontypeable strains of *H. influenzae*) in those at risk for poor outcomes. Coverage for *Pseudomonas* is indicated in